



A Fire Safety Business Resource

Hotels, Motels & Lodging Establishments

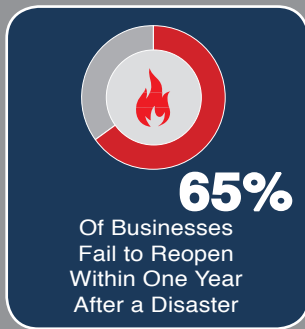
A COMMUNITY INFORMATION GUIDE

WHAT TO KNOW

MORE INFO



For more information
visit us at:
estesvalleyfire.org/prevention



Estes Valley Fire
Protection District

prevention@estesvalleyfire.org

Protecting the Estes Valley since 1907

Fire & Life-Safety Checklist

Below are important fire & life-safety requirements from the adopted Fire Code that apply to lodging facilities

Exterior

- Address numbers are posted on the building, on individual units, on monument signs, and are visible and meet District standards.
- Fire lane signs & curb markings are maintained.
- Gas meters & propane tanks are protected from vehicle impact.
- Fire hydrants have a surrounding 3-feet of clearance.
- Fire department connections are accessible and unobstructed.
- Trash containers & dumpsters are 5-feet away from the building.
- KnoxBoxes have updated building keys for firefighter access.

Means of Egress (Exiting)

- All required exit doors can be opened from the interior freely with a single motion and without the need to unlock additional hardware.
- All exit signs are illuminated and emergency lights function properly under building power and emergency backup power.
- All exit doors are unlocked and maintained free from obstructions.
- Occupancy load signs are posted in assembly spaces and meet District standards.

Fire Extinguishers

- Are mounted, accessible, and serviced annually by a technician.

Fire Sprinkler & Fire Alarm Systems

- Are serviced annually by a technician with any noted deficiencies on service reports having been corrected.
- Storage is maintained 18-inches below fire sprinklers throughout.

Smoke Alarms & Carbon Monoxide Detectors

- Are installed in the correct locations and are fully operational.
Have records for testing monthly w/ annual battery replacement

Commercial Kitchens

- *See our guide for restaurants & eating establishments.

Electrical & Heating Safety

- Extension cords or multi-plug adapters are not used permanently.
- Portable space heaters are only used as allowed.
- Mechanical & equipment rooms are free from all storage.

Insurance We encourage on-site evaluations with your provider.